



RENAULT
PRO+

Renault KANGOO



January 2021





Efficient, adaptable and durable

The Renault KANGOO has been specifically designed with your needs in mind, whatever your business environment. With panel vans, crew vans and fully electric versions, the KANGOO can be adapted to your every demand, offering you a wide range of tailor made and practical solutions.

Giving you assistance and control

Here at Renault, nothing is more important to us than your safety and comfort which is why our range of driving assistance systems is more innovative than ever and most come as standard on all our vans! Our range of infotainment systems include our DAB radio with USB connectivity and Bluetooth.^{®**^}

Rear Parking Sensors*

Parking made all that bit easier with sensors alerting you when your getting close to what's behind you!

Hill Start Assist

No more tricky hill starts as your van will hold you for a couple of seconds to ensure you have time to pull off in gear



Grip Xtend

Helping you navigate over loose surfaces at the push of a button

16" Steel wheels with large stylers***

Electronic Stability Control

Helps keep you stable in the KANGOO, even when faced with extreme driving conditions

*Standard on Business+ (Manual air conditioning not standard on Business+ Z.E.)

^For compatible devices, please refer to <https://www.renault.co.uk/services/multimedia/bluetooth-compatibility.html>

**Optional

***Standard on Business+ and Z.E.



Ergonomic and comfortable workspace

Renault has developed clever solutions to increase practicality whilst improving safety. KANGOO has optimal visibility and ergonomic controls which create a car-like driving position.









Cutting emissions and your costs

Our KANGOO Z.E. is 100% electric, offering you the same generous load capacity of their equivalent diesel versions but with ultra-low running costs and all the benefits of owning a Renault electric vehicle. The quiet yet instant pulling power means your KANGOO Z.E. is simply a pleasure to drive. From easy to charge solutions such as the wallbox* (for home or business recharging) to charging stations at work or local public areas - the benefits simply keep on coming.



Winner of
Green Award



* Wall-box not included in purchase

Renault Z.E.

Always a step ahead

Renault has been pushing the boundaries of innovation from revealing the Z.E concept car in 2008, and since then has been a leader in electric vehicle manufacturing in Europe. It has been a priority to fulfil our commitment and continue to develop our technology so that our vehicles stay at the forefront of the electric vehicle market.

First place on the track - first choice on the road

Our commitment to electric motoring innovation runs deeply in Renault's brand DNA. We were a founding partner in Formula E™, the FIA's newest race series. Winning the team championship in 2014/15 and 2015/16 seasons, along with the driver's championship in 2015/16, proves superior electric technology on the track and as one of Europe's best selling EV brands on the road.



Easy Electric Life

Electric mobility does not have to be more complicated than fuel-powered vehicles.

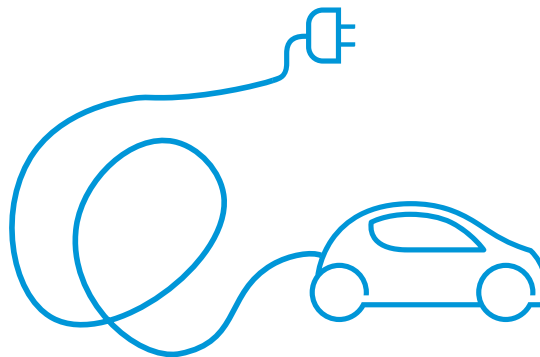
Far from it, electric power comes as second nature in most areas of our lives - have you ever thought about filling up your smartphone with fuel? Your van does not need to be any different from your phone, simply put it on charge.

Renault PRO+ Electric Vans

Electric isn't just the future, it's right now. That's why our customers have been driving electric vehicles since 2011, and we've since developed the largest model range of electric LCVs in the UK. For you and your business, the result is key. So you'll be pleased to hear that with a Renault PRO+ electric van, you could make significant savings compared to running a diesel or petrol van. Plus, with over 11,000 charging points in the UK, isn't it time for you to join the electric revolution?

It's in our nature

Through supplying the Eden Project in Cornwall with a fleet of 3 ZOE, 13 KANGOO Z.E. and 4 TWIZY, we are supporting them in their mission to connect people with each other and the living world, exploring how we can work together towards a better future.





Your 100% controlled driving range

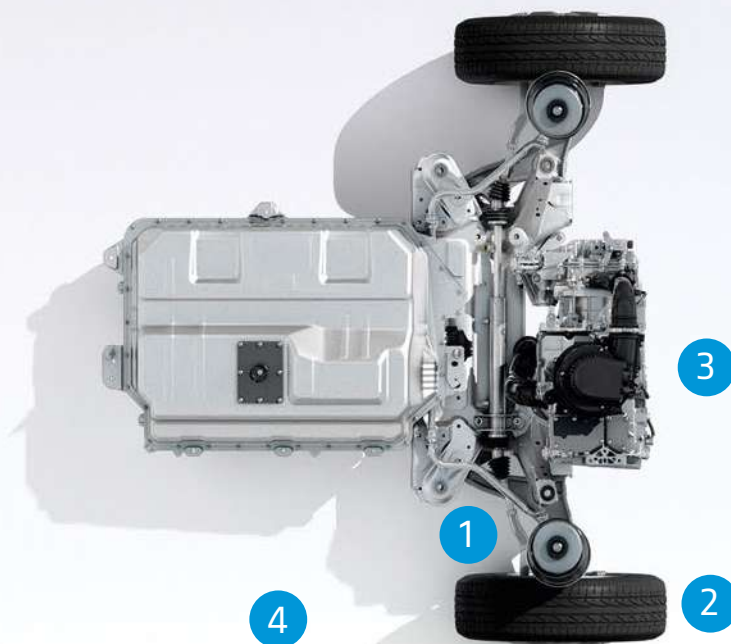


KANGOO Z.E. has 143 miles⁽¹⁾ of driving range in actual use thanks to its lithium-ion Z.E. (33 kWh) battery. The 44 kW power unit offers a torque of 225 Nm and optimum driving comfort. A range of on-board technologies, such as regenerative braking (the battery recharges when the accelerator pedal is released or when the brake pedal is pressed) or the Eco mode (less abrupt acceleration and maximum speed of 50 mph), help optimise your driving range. You can charge your KANGOO Z.E. in just 6 hours with a 32 A/7 kW Wallbox. The recharging flap located on the nose of the vehicle, is easily accessible.

(1) Real-world driving range greater than 75 miles including the most severe use (high load, city centre driving with frequent stops and winter conditions). Actual consumption also depends on the equipment, the driving style of the driver and the elevation profile of the route.



1. Regenerative braking. The battery recharges when you take your foot off the accelerator or when you press on the brake pedal.



2. Low consumption tyres. Their low rolling resistance contributes to conserving your driving range without degrading your road-holding or braking ability.

3. Eco mode. When you activate this, you reduce the power output of the vehicle so that you can travel further (less abrupt acceleration and maximum speed of 50 mph).

4. 7 kW charger. Recharge the battery in just 6 hours with a 32 A/7 kW Wallbox. The recharging flap located on the right-hand side of the cab, is easily accessible.

Driving range

KANGOO Z.E. is now available with the Z.E. Battery giving a revolutionary WLTP* range of 199 miles (city cycle) on one charge, meaning range anxiety is a thing of the past. With real life estimates of 124 miles in summer and 75 miles in winter** the KANGOO Z.E. is able to get you wherever you need to go with less need to recharge on the way, saving you time and money.

WLTP range* Combined cycle (miles)	WLTP range* City cycle (miles)	Summer (+20°C)	Winter** (-5°C)	Cost in Pence p/per mile†	Cost per full recharge†
143	199	124	75	Less than 4p	Less than £5

Top tip: Need an extra boost to get home? The KANGOO charges 15-21 miles on just an hour of charge.

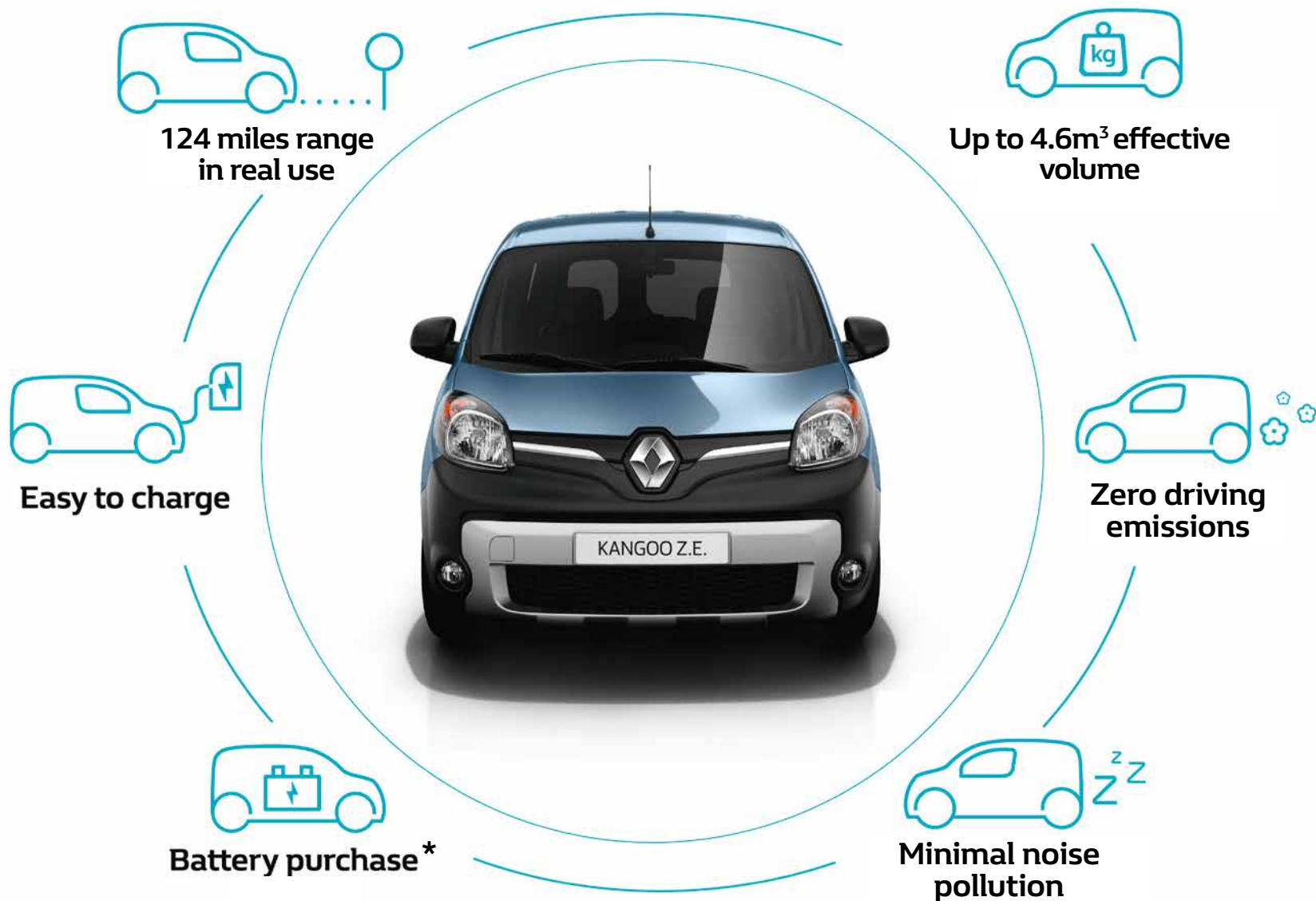
*What is WLTP and why the real-life range is similar to it?
Worldwide Harmonized Light Vehicles Test Procedures (WLTP), this new homologation protocol gives fuel consumption and driving range results that are much closer to real life conditions figures than the NEDC protocol. While the old NEDC test determined test values based on a theoretical driving profile, the WLTP cycle was developed using real-driving data, gathered from around the world. WLTP therefore better represents everyday driving profiles.

**Why is the range reduced in winter?
Like all batteries, those in Z.E. vehicles are less efficient in cold weather than at warmer ambient temperatures. This means that you can expect a reduction in the range of your Renault Z.E. in the winter. Also, in winter you are more likely to use the heating, which means KANGOO Z.E. consumes more energy.

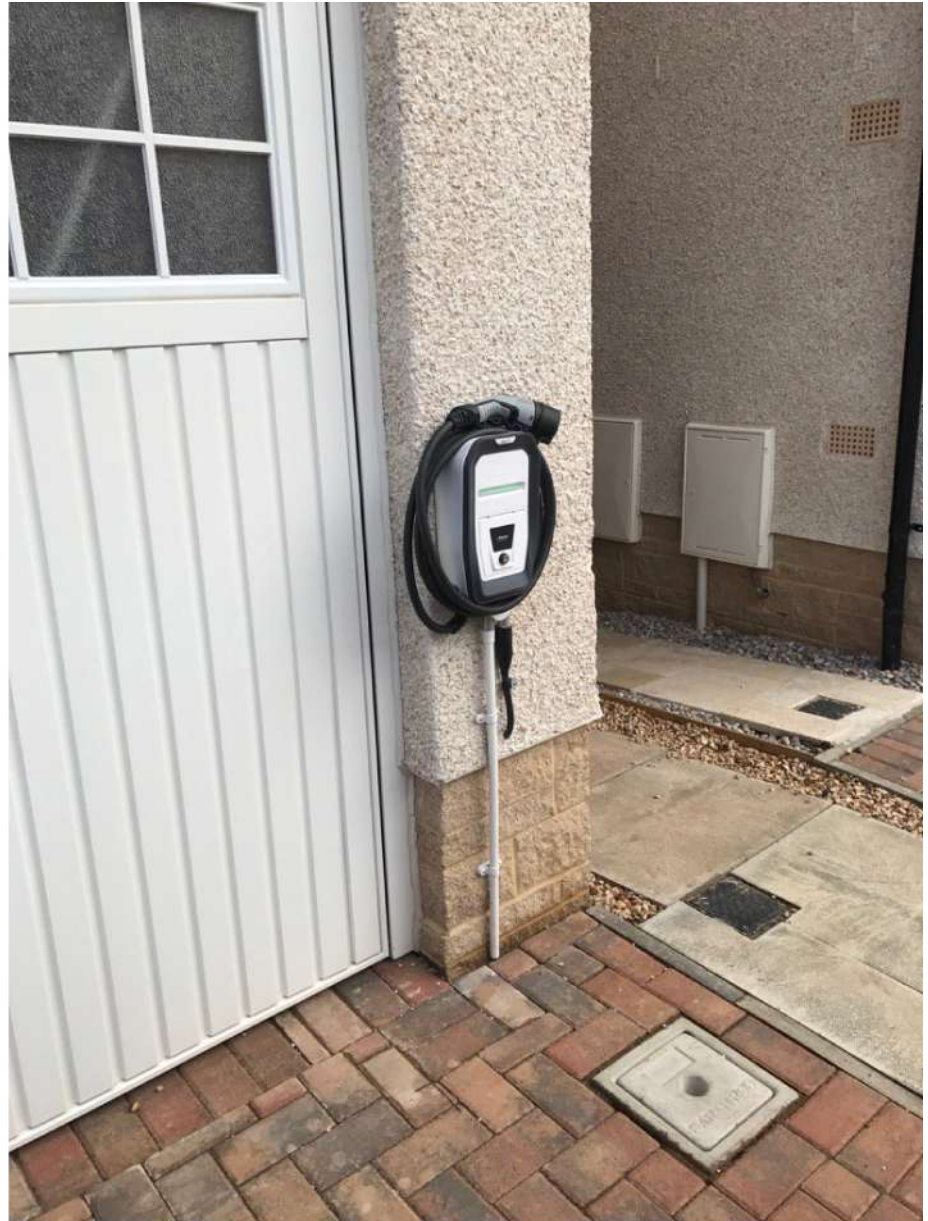
Choose the charging solution for you

Type of charger	Where to use it	Power required	Charging times (0-100%)	
Home (3-pin plug cable)*	Home / Office	2.3kW/10A	17 hours	Occasional slow charging. *Requires additional purchase of a EVSE cable.
	Home / Office	3.3kW/14A	12 hours	
Wallbox / Public charging point	Home / Office / On the go	3.7kW	11 hours	Leaving the KANGOO to charge overnight on a 3.7kW charger ensures that it will be ready for when you to begin your next day.
	Home / Office / On the go	7kW	6 hours	
Public charging point	On the go	22kW	6 hours	A standard charging time of 6 hours means your vehicle is ready to go when you are.
	On the go	43kW	6 hours	

†Less than £5 full recharge cost based on 6 hours of 14.4p per kWh (Source: UK Power) Full recharge of the 33 kWh battery
(1) For illustration purposes only, may not reflect real-life journeys.



*Battery guarantee of 5 years / 62,000 miles, whichever comes first, this includes the battery performance guarantee to at least 70% of its original capacity.



Standard features

BUSINESS



15" SCRIPT wheels



TANEGA Upholstery



THE BASICS:

- Electrically operated door mirrors
- Electric front windows
- Height adjustable steering wheel
- ABS with EBD (Electronic Brake Force Distribution)
- Alarm (perimeter)
- Height adjustable drivers seat
- Deadlocking
- R.A.I.D (Renault Anti Intruder Device)
- ESC (Electronic Stability Control) with Hill Start Assist and Grip Xtend⁽¹⁾
- Front and rear disc brakes*

MAKING YOUR JOURNEY COMFORTABLE:

- Central storage tray between front seats
- A4 storage in dashboard
- Manual air conditioning with pollen filter (KANGOO and KANGOO Maxi dCi 115 only)

WHAT YOUR VAN LOOKS LIKE:

- 15" SCRIPT wheels
- Dark grey side protection mouldings
- Front and rear dark grey bumpers
- Unglazed 180° asymmetric rear doors
- Unglazed side loading door – left side (KANGOO Van) / left and right side (KANGOO Maxi)

PROTECTING YOU AND YOUR LOAD:

- Anchorage points in load area – 6 on KANGOO and KANGOO Maxi Crew Van / 14 on KANGOO Maxi
Weight allowed per anchorage point: approximately 500kg
- Spare wheel
[Not available on Crew Van Z.E. and Crew Van Cab Z.E.](#)
- Full steel bulkhead (Not available on KANGOO Crew Vans)
- Tyre repair system (Standard on Crew Van Z.E. and Crew Van Cab Z.E.)

KEEPING YOU CONNECTED:

- 2x15W DAB radio with AUX input, CD, Bluetooth^{®†} and USB connectivity
- Eco mode function
- 12V power socket (front)

GOING ELECTRIC:

- Front Z.E. charging socket
- Pre-heating function**
- Standard charging cable 32A (IEC 629196 - Type 2 Mennekes) 6m
- Z.E. voice
- 15" BRIGANTIN wheels (Not available on Crew Van Cab Z.E.)

CREW VAN ADDS:

- Second row of 2 passenger seats (KANGOO Z.E. Crew Van has a second row of 3 passenger seats)
- Interior side panel
- Folding passenger rear seat (1/3 - 2/3)
- Unglazed left and right side loading doors [\(KANGOO Z.E. Crew Van has glazed side loading doors with opening windows\)](#)
- Unglazed left and right side quarter panel
- Unglazed rear doors - 180° asymmetric

CREW VAN CAB ADDS:

- Multipositional bulkhead

* For ML19 ENERGY dCi 80, dCi 95 and dCi 115 versions rear drum brakes are fitted as standard. **Requires R-link. (1) No Grip Xtend on KANGOO Z.E.

† For compatible devices, please refer to <https://www.renault.co.uk/services/multimedia/bluetooth-compatibility.html>

Standard features

BUSINESS+ (additional equipment to Business)



15" BRIGANTIN wheels



TANEGA Upholstery



MAKING YOUR JOURNEY COMFORTABLE:

- Electrically operated and folding door mirrors
- Electric front windows (driver's side one-touch descending)
- Centre console with armrest
- Overhead parcel shelf
- Load area rubber floor covering
- Manual air conditioning and pollen filter
(Not standard on KANGOO Z.E.)
- Rear parking sensors

PROTECTING YOU AND YOUR LOAD:

- 15" BRIGANTIN wheels
- Front and rear body coloured bumpers and gloss black wing mirrors

GOING ELECTRIC:

- Metallic paint

Colours



MINERAL WHITE ⁽¹⁾
(QNG)



CARMEN RED ⁽¹⁾
(719)



URBAN GREY ^{(1) (3) (4)}
(KPW)



JET BLACK ⁽²⁾
(GND)



MOCHA ⁽²⁾
(CNB)



HIGHLAND GREY ⁽²⁾
(KQA)



OYSTER GREY ⁽²⁾
(KNG)



NIGHTWATCH BLUE ⁽²⁾
(RNL)

(1) Non metallic paint

(2) Metallic paint

(3) Not available with front and rear body coloured bumpers

(4) KANGOO Z.E. Business+ must be ordered with Sport front bumper with silver insert and Front fog lights

	Mineral White QNG	Carmen Red 719	Urban Grey KPW	Jet Black GND	Mocha CNB	Highland Grey KQA	Oyster Grey KNG	Nightwatch Blue RNL
Business	●	●	●	○	○	○	○	○
Business Z.E.	●	●	●	○	○	○	○	○
Business+	●	-	-	○	○	○	○	○
Business+ Z.E.	●	-	-	●	●	●	●	●

● = Standard (therefore no cost) ○ = Optional - = Not available It should be noted that printing limitations do not permit the subtle paintwork shades on these pages to be shown with absolute accuracy.

Versions - KANGOO

KANGOO VAN Z.E.

VERSIONS	WLTP CO ₂ (g/km) [†]	Power unit output kW (bhp)	Load volume (m³)	Max. payload (kg)
PANEL VAN BUSINESS				
L2H1				
ML20 i Z.E.	0	44 (60)	3.0	625
L3H1				
LL21 i Z.E.	0	44 (60)	4.0	605
PANEL VAN BUSINESS +				
L2H1				
ML20 i Z.E.	0	44 (60)	3.0	625
L3H1				
LL21 i Z.E.	0	44 (60)	4.0	605
CREW VAN BUSINESS				
L3H1				
LL21 i Z.E.	0	44 (60)	1.3	640
CREW VAN CAB BUSINESS				
L3H1				
LL21 i Z.E.	0	44 (60)	2.4	639

[†] WLTP figures shown are for comparability purposes; only compare figures with vehicles tested to the same technical procedures. Actual real world driving results may vary depending on factors such as weather conditions, driving styles, vehicle load or any accessories fitted after registration. WLTP is a new test used for fuel consumption and CO₂ figures. Please visit renault.co.uk/configure for WLTP figures for any selected options. *All prices shown are the manufacturer's recommended retail prices. The "On The Road" price Includes delivery to the dealer premises, number plates, one one-litre bottle of oil and one four-litre bottle of AdBlue[®] starter pack, 12 months government road fund licence at £260 (or £165 for for vans with a GWV of more than 3.5 tonnes) and the First Registration Fee of £55. Other goods or services supplied by agreement between the customer and the dealer are not included.

Equipment and options

	BUSINESS Z.E.		BUSINESS+ Z.E.
	LWB	Crew Van	LWB
BASICS			
Airbag - front passenger ⁽⁵⁾	○	○	○
Airbag - front lateral (thorax) & front passenger	○	○	○
Increased payload (max. 800kg) ^{(4) (6)}	-	-	-
Interior side door panel	○	●	○
Rear disc brakes ⁽³⁾	●	●	●
Tow bar (13-pin)	-	-	-
Tyre repair kit (standard on Crew Van Z.E. versions)	○	●	-
SAFETY			
2 Additional anchorage points in loading area, weight allowed per anchorage point: approximately 500kg	●	-	●
All-weather tyres ⁽¹²⁾	-	-	-
Automatic headlights and wipers with front fog lights	○	○	○
Bulkhead - fixed grille on the back of rear seats (Crew Van only) ⁽⁷⁾	-	○	-
Bulkhead - swivelling with folding passenger seat	○	-	○
Bulkhead - tubular	○	-	○
Front fog lights	○	○	○
Load area rubber floor covering	○	○	●
Tyre pressure monitoring system	-	-	-
CONNECTIVITY			
R-LINK Evolution multimedia system, TomTom® Live services 1-year subscription, application store and ECO2 driving menu, 2x15W DAB radio, CD, MP3 player with separate display and Bluetooth® connection ⁽¹⁾	○	○	○
TomTom® Live services 3-year subscription ⁽⁹⁾	○	○	○
TomTom® Live satellite navigation system Western Europe map upgrade ⁽⁹⁾	○	○	○
COMFORT			
Central console with plastic armrest	○	○	●
Climate control with automatic headlight and wipers ^{(10) (17)}	-	-	-
Cruise control with speed limiter	○	○	○
Electric front windows - driver's side one-touch descending	○	○	●
Engine speed limiter (56mph OR 62mph OR 68mph)	○	○	○
Leather steering wheel	-	-	○
Manual air conditioning with pollen filter ⁽¹¹⁾	-	-	-
Overhead parcel shelf	○	○	●
Rear parking sensors	○	○	●
Smoker pack	○	○	○
STYLE			
15" ARIA alloy wheels	-	-	-
Extra tinted glass in rear windows	-	-	-
Metallic paint	○	○	●
Sport front bumper with silver insert ^{(18) (21)}	○	○	○
Standard bumper	●	●	○
ELECTRIC			
Additional heating unit ⁽¹⁶⁾	○	-	○
EVSE Cable for 10 amp charging for domestic 3-pin plug	○	○	○
Manual air conditioning and pollen filter with heat pump	○	○	○
My Z.E.Connect - 3-year renewal subscription (1-year free subscription) ⁽⁹⁾	○	○	○

● = Standard (therefore no cost) ○ = Optional - = Not available *Manufacturer's recommended retail prices.

(1) For list of compatible Bluetooth devices visit <https://www.renault.co.uk/services/multimedia/bluetooth-compatibility.html> (2) Please note for Crew Van only, ordering glazed side loading doors could make your vehicle liable for VAT. You are advised to contact your local tax authority (3) Only available as an option on ML19 (4) Standard on ML20 and LL21 versions (5) Can be deactivated (6) Must be ordered with rear disc brakes (7) Not available on Crew Van Cab (8) Not available on KANGOO Z.E. - Must be taken with mud and snow tyres (9) Can only be ordered with Renault R-LINK Evolution multimedia system (10) Not available with full-steel bulkhead (11) Standard on dCi 115 versions (12) Not compatible with ML20 versions and with alloy wheels (will be replaced by new tyres) (13) Not available in Carmen Red (14) Must be taken with glazed side loading doors (15) Not compatible with auto closing doors and proximity radar type 4 (16) Not compatible with multipositional bulkhead and Crew Van Cab versions (17) Replaces manual air conditioning (18) Must be taken with front fog lights (19) Requires overhead parcel shelf (20) Not compatible with sports bumper (21) Not compatible with body-coloured bumper

Doors and windows

	KANGOO Z.E.	
	LWB	Crew Van
Right side loading door - unglazed	●	-
Glazing for left and right side loading doors non opening windows each (for both sides) ⁽¹⁾	○	-
Opening windows for left and right glazed side loading doors	-	●
Glazed rear quarter panels	○	○ ⁽¹⁾
Rear doors - 180° glazed with rear wipers and rear heated window	○	○
Rear tailgate - glazed with rear wipers and rear heated window	-	-

● = Standard (therefore no cost) ○ = Optional - = Not available (1) Not available on Crew Van Cab Z.E.
[KANGOO Z.E. Crew Van and Crew Van Cab comes standard with left and right glazed side loading doors with opening windows](#)

Dimensions - KANGOO Maxi & Z.E.



DIMENSIONS (mm)

	Maxi Panel Van	Maxi Crew Van	Maxi Crew Van with multi positional bulkhead
Average Payload diesel/electric	779kg - 794kg / 605kg	684kg - 699kg / 640kg	684kg - 699kg / 639kg
Load volume diesel/electric	4.0m³ to 4.6m³ / 4.6m³	1.3m³ to 3.4m³ / 3.4m³	2.4m³ to 3.6m³ / 3.6m³
A Wheelbase	3,081	3,081	3,081
B Overall length	4,666	4,666	4,666
C Front overhang	875	875	875
D Rear overhang	710	710	710
E Front track width	1,521	1,521	1,521
F Rear track width	1,533	1,533	1,533
G Overall width (without mirrors)	1,829	1,829	1,829
G1 Overall width (with mirrors)	2,138	2,138	2,138
H Unladen height	1,810 to 1,836	1,802 to 1,826	1,802 to 1,826
H1 Height with opened rear doors	1,893 to 1,920	1,878 to 1,902	1,878 to 1,902
J Sill Height	575 to 601	563 to 586	563 to 586
K Ground Clearance (unladen)	170 to 212	170 to 212	170 to 210
K1 Ground clearance (laden)	145 to 172	145 to 172	150 to 172
M Elbow room (front/rear)	1,510 / -	1,510 / 1,539	1,510 / 1,539
N Front interior width (front/rear)	1,464 / -	1,464 / 1,507	1,464 / 1,507
Q1 Rear interior height	1,252	1,154	1,154
Y Rear width- top	1,141	1,141	1,141
Y1 Rear width-bottom	1,219	1,219	1,219
Y2 Width between wheel arches	1,218	1,145	1,145
Z Loading height	1,129	1,129	1,129
Z1 Loading length	1,862	1,008	1,361
Z2 Loading length at floor / with option folding passenger seat	2,115 / 2,886	1,328 / 2,210	1,432 / 2,043

^Payload equals the Maximum Operating Mass (Gross Vehicle Mass or GVW) less the Kerb Mass. Kerb Mass is the weight of the complete vehicle including coolant, oil, a 90% full fuel tank, spare wheel and jack, but excluding driver and crew. All Kerb Masses, and therefore Payloads quoted are subject to a 5% manufacturing tolerance and are based on the base level model. Any additional equipment added (options or accessories), or the selection of a higher trim level, can result in a higher Kerb Mass and reduced Payload, and may increase CO₂ and decrease MPG figures.

Technical Specifications - KANGOO Z.E.

KANGOO MAXI Z.E.

BATTERY	
Battery type	Lithium-Nickel-Manganese-Cobalt (LiMiNmCoO)
Battery weight (kg)	260kg
Fuel type	Electric
Max engine power kW (hp)	44 Kw / 60 hp
Max Torque (nm)	225
RANGE	
Range (NEDC) miles	170
Range (WLTP) miles	143
Range in temperate conditions (+20°C) (miiles/km)	124 / 199
Extreme winter conditions (-5°C) (miles/km)	75 / 120
Extreme winter conditions (-5°C) with air-con & heat pump (miles/km)	84 / 135
Extreme winter conditions (-5°C) with external heater (with or without air-con & heat pump) (miles/km)	99 / 160
DRIVE TRAIN	
Type	Traction
Motor and drive train features	Synchronous with rotor coil
TYRES	
Tyre size	195/65 R15 95T (Energy Saver)
BREAKING SYSTEM	
Front disc brakes (mm) (diameter/thickness)	280/24
Rear disc brakes (mm) (diameter/thickness)	274/11
PERFOMANCE	
Maximum Speed mph	81
0-62mph (sec)	22.3
FUEL CONSUMPTION*	
Electricity consumption (kWh/mi)	245
BATTERY CAPACITY	
Battery Capacity (kWh)	33
WEIGHT (KG)	
Kerb weight - empty without option	1585
Gross vehicle weight	2190
Gross train weight	2512
Payload ^	605
Roof payload	100
Towing	Not permitted
SERVICING INTERVALS	
Service Intervals	Z.E. Services - 1st Year / 12,000 miles 2nd Year / 24,000 miles then every 24,000 miles or 2 years after that
WARRANTY	
Warranty	3 years: unlimited the 2 first years, then limited to 100,000 miles, whichever comes first

*WLTP figures shown are for comparability purposes; only compare figures with vehicles tested to the same technical procedures. Actual real world driving results may vary depending on factors such as weather conditions, driving styles, vehicle load or any accessories fitted aft er registration. WLTP is a new test used for fuel consumption and CO₂ figures. Please visit renault.co.uk/configure for WLTP figures for any selected options. ^Payload equals the Maximum Operating Mass (Gross Vehicle Mass or GVW) less the Kerb Mass. Kerb Mass is the weight of the complete vehicle including coolant, oil, spare wheel and jack, but excluding driver and crew. All Kerb Masses, and therefore Payloads quoted are subject to a 5% manufacturing tolerance and are based on the base level model. Any additional equipment added (options or accessories), or the selection of a higher trim level, could result in a higher Kerb Mass and a reduced Payload, and may increase CO₂ and decrease MPG figures.

Accessories



1.

Kangoo Van comes equipped with a full height steel bulkhead as standard

Continue the Renault KANGOO experience
at www.eurocar.bm



Although every effort has been made to ensure that the information contained within this brochure is as accurate and up to date as possible, Eurocar Ltd. reserves the right to modify its models without notice, including their characteristics, specifications, equipment and accessories. Brochures inevitably become out of date or inaccurate in some respects, in that such characteristics, specifications, equipment, or accessories may be changed after the publication date given below and can differ from the descriptions given or the photos displayed. It is therefore necessary to check with your Renault Dealer before purchasing any product that the characteristics, specifications, equipment or accessories of the vehicle on order are as advertised.